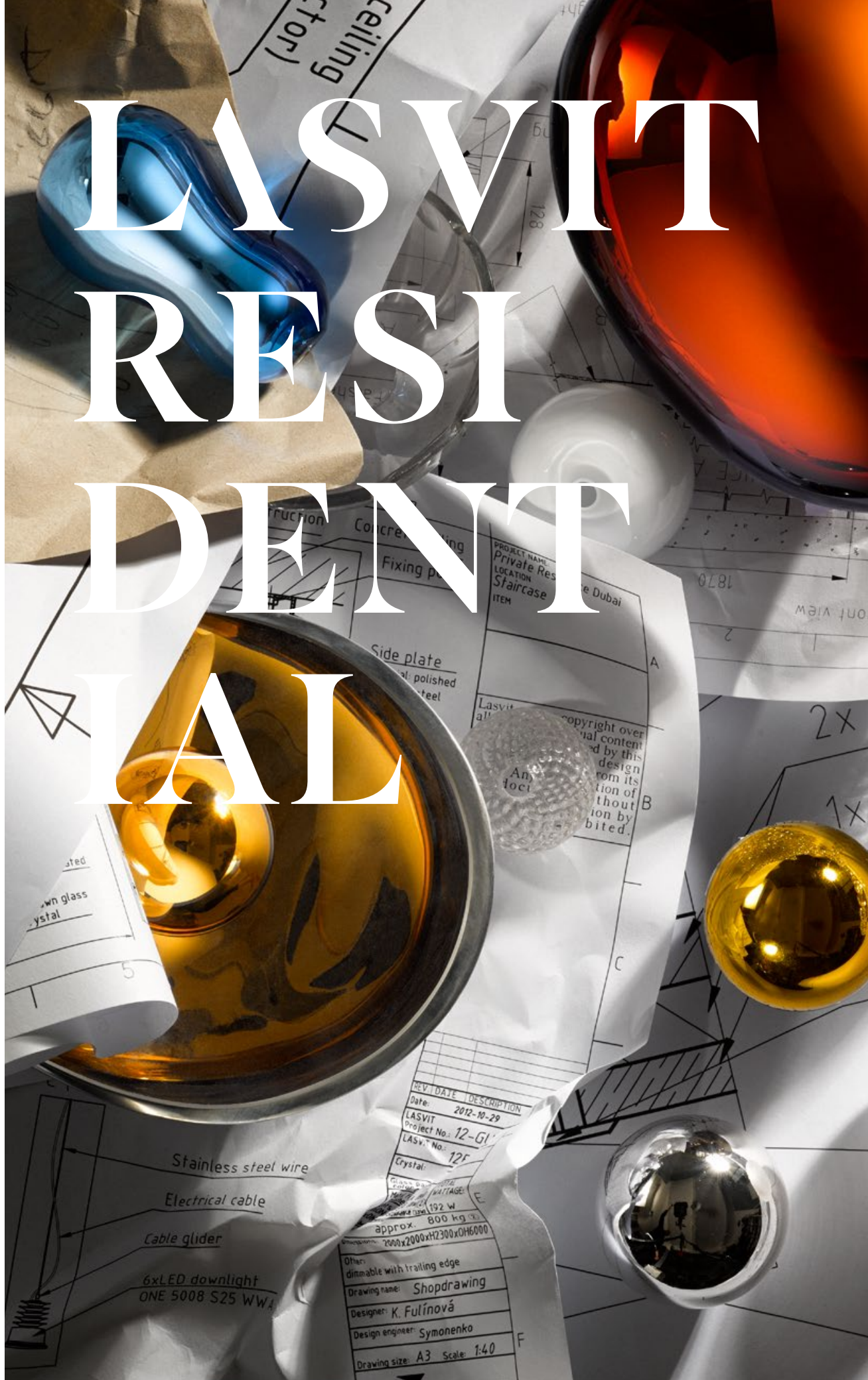


LASVIT RESIDENTIAL



REV.	DATE	DESCRIPTION
	2012-10-29	
LASVIT Project No: 12-Gl		
LASvit No: 12F		
Crystal:		
approx. 800 kg		
2000x2000xH2300xOH6000		
Other: dimable with trailing edge		
Drawing name: Shopdrawing		
Designer: K. Fulínová		
Design engineer: Symonenko		
Drawing size: A3 Scale: 1:40		

LASVIT RESI DENT IAL

Introduction/	4
Bespoke Installations/	36
Collections/	104
Our Designers/	124
Lasvit Contacts/	130

THE BEAUTY AND ELEGANCE OF CZECH GLASS IN YOUR HOME

Beauty and elegance came together in the heart of Europe and made Czech (Bohemian) glass famous for its unique and extraordinary quality. It became the decoration of choice in nearly every palace for centuries. Whether cut, blown or otherwise embellished, the eyes of Roman Emperor Rudolf II, French king Louis XV or Empress Elizabeth the Great of Russia surely fell on its sparkling surface as they shaped human history. The creative uses of locally available natural resources and versatility of the product allowed the manufacture of glass to become a staple of Czech industry, a symbol of the small country's aesthetic tradition and a craft passed on from generation to generation. Bohemian glass adapted to every artistic use. It remains a luxury each household hands down to future generations.

LASVIT



The translation of Lasvit is not only light and love. Thanks to the founder of the company, Leon Jakimic, there is more to discover. Everyone needs light to illuminate a space for seeing in the dark. Lasvit's illumination is opening a gap in the dark grey world of monotonous forms and through surprise and astonishment is creating a sensation of warmth and well-being. Fundamental to design is pleasure and joy in everyday experience. Lasvit has transformed glass into one of the most intriguing materials in the world. Ever since this transparent material was conceived, we were able to look, enlarge and change views in our homes and feel an undeniable sense of luxury. Human beings made significant improvements in the process of refining glass. Glass became unique and the spectrum ranges from containing liquids to enriching, reflecting, emphasizing wealth, beauty and otherworldliness. The Beatles famously sang: 'Picture yourself in a boat on the river with tangerine trees and marmalade skies'. The idea of a mirror and reflecting opens a large perspective of possibilities. In Bohemia there was significant production of mirrors particularly in Sloup v Cechach, where the noble Kinsky family, of noble Bohemian aristocracy well positioned at the Habsburg court in Vienna, developed the industry. Mirrors are reflective in candle light, but also to one's own image. Reacting to this, Bohemian glass with a silver inlay was developed to be more accessible, yet yielding the same effect. At the same time, in Vienna all talked about farmer's silver, which by adding amber glass became gold.

The Czech heritage, especially the Bohemian tradition, is fundamental to the Lasvit light experience. Lasvit Art Director Maxim Velcovsky, internationally renowned for his deep knowledge of history, commissioned the major Czech Artist Rene Roubicek which in itself made a statement to the importance and continuous development of the Czech glass industry. Due to political restrictions on the artists in Roubicek's time, his artistic expression was through glass, and in this he showed his excellence. His ability reached its peak by freezing action painting into glass. The political value of Bohemian glass in history is represented by important chandeliers from the Scala in Milan to the palaces in St. Petersburg. Lasvit has enforced this historical value by sending out a strong message of love and light. The spectrum of possibilities to work with glass encompasses blowing, pressing and cutting which manifest in ever-changing possibilities of expression and wonder. The Lasvit community also link the firm's identity to the world's oldest glassmaking school. Since 1856 the school has been based in Kamenický Šenov, a town with a long chandelier-making history, often called the Town of Chandeliers or the Town of Light. You discover the history of the past and the continuous evolution of this art in Lasvit's work. The center of this glass world is Novy Bor, home to Lasvit and centre to many wonders.

Dr. Stephan Hamel

A man in a grey suit and dark shirt stands in a workshop, looking down at a wooden mold. The workshop is filled with various wooden molds and tools, some with names like 'DRIADE', 'PRUNIER', 'VICTOR', 'MARIA', and 'FUSION' written on them. The lighting is warm and focused on the man and the molds.

OUR MISSION IS
TO TRANSFORM
GLASS INTO
BREATHTAKING
LIGHT AND
DESIGN
EXPERIENCES

The brand Lasvit, founded in 2007 by Leon Jakimic, focuses a new light on Bohemian glass and takes it boldly into the next millennium. Lasvit combines the authenticity of glass craft with innovative technologies and creative craftsmanship. In a few short years, Lasvit established itself as the foremost expert in the design, production and installation of bespoke hand-blown glass lighting sculptures and art installations. Collaborations with renowned designers and artists produced unique glass collections. Nendo, Ross Lovegrove, Daniel Libeskind, Michael Young, Arik Levy, Maarten Baas, Czech legends Rene Roubicek and Borek Sipek are among those who chose Lasvit to embody their unconventional artistic visions, endow them with the precision and mastery of our glassmakers, and produce an impressive creative oeuvre. This is a manifesto of Lasvit's uncompromising mission: To transform glass into breathtaking light and design experiences.

STORY OF GLASS

Land / Craft / Beauty

History

Czech glass originated deep in the forests of Central Europe. Historically, the first glassmakers in this area were the Celts, and the oldest record of glass production in Bohemia reaches back to 1162.

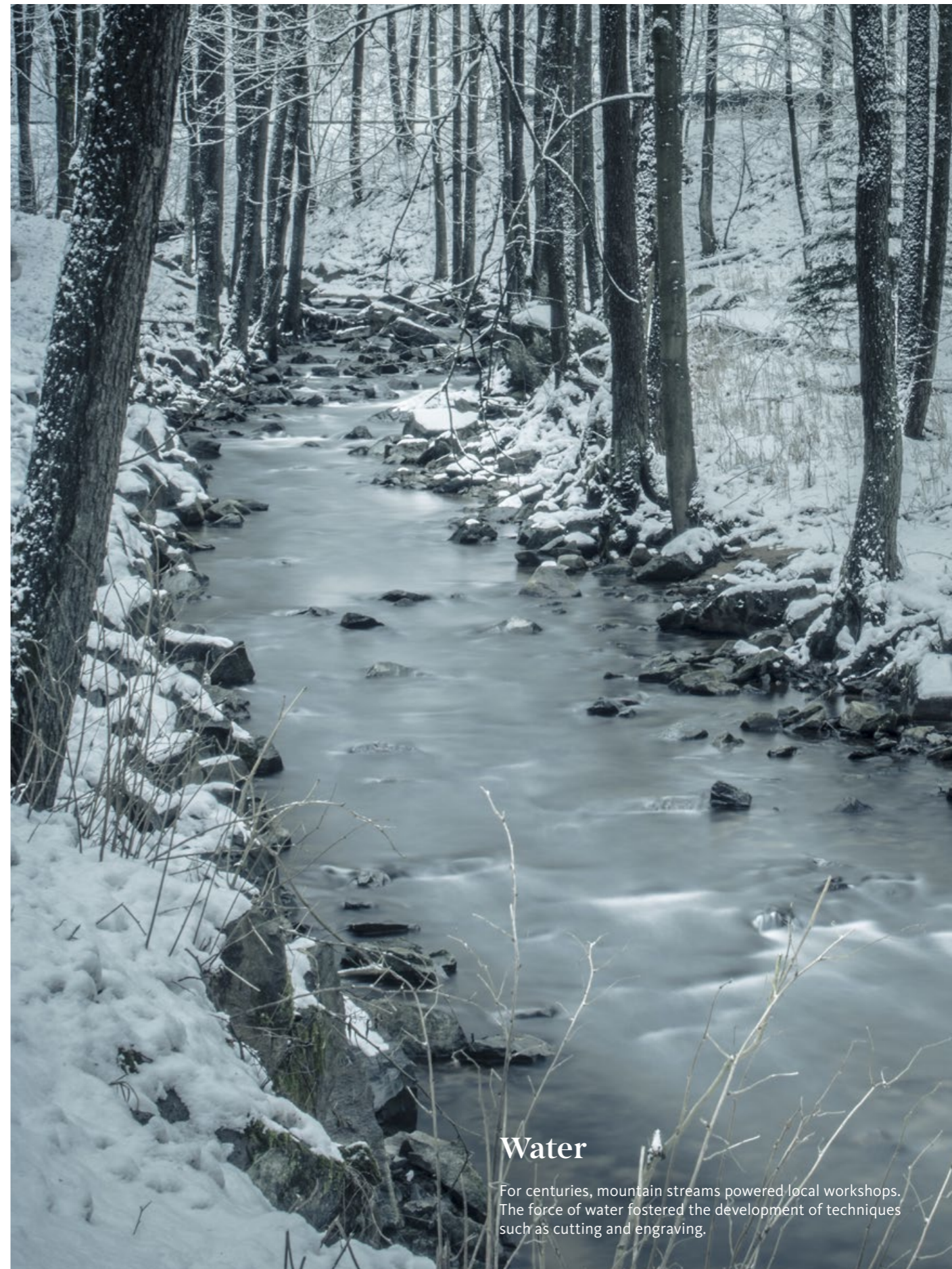
Inspiration

As in centuries gone by, today's artists and designers find their inspiration in nature. Bohemia offers a true feast for the eyes in its unusually diverse landscapes, from frozen waterfalls in winter to colorful summer flowers. It's no surprise that these surroundings find their way into glassmaking.



Wood

Forests provided early glassmakers with an essential ingredient – wood for their energy-demanding kilns. Even today, centers of glassmaking reside in many remote locations outside big cities.



Water

For centuries, mountain streams powered local workshops. The force of water fostered the development of techniques such as cutting and engraving.



People

In small Czech towns and villages, the art of glassmaking was handed down from fathers to sons for generations. Today's highly skilled workers can be found in these pockets of glassmaking tradition.



Craft

The history of glass is written in the hands of the glass-master.

Carvers

The first craftsmen who contribute to our glass designs are wood carvers. Precision turning of wooden molds for glassblowing on a lathe requires unique skills. The completed cavity must precisely match design specifications.



Moulds

Wooden moulds are soaked in water for 4 days before use. Only then can they withstand contact with molten glass of up to 1650 °C (3180 °F).



Blowers

It takes years of training to become a glass-blower of the skill you have come to rely upon from Lasvit. With its long tradition, world-renowned glass schools and newly opened borders, the Czech Republic once again recovered its title as a renowned center of glassmaking. We bring the old masters and young talent together – the cream of the crop.



Collaboration

Glassmaking is a collaborative effort – and not only between the craftsmen around the kiln. Each piece begins with our designers, glass blowers and decorators, ultimately requiring precise technical installation at its final destination.



Trust

Molten glass begins to harden the moment it's removed from the kiln. To be safe and productive, glass-blowing requires knowledge, skill and speed. Its underlying essence is trust among colleagues. Watching them in action is much like observing a choreographed dance. Lasvit teams take choreography to its next level with clockwork precision, scheduling and installation.

Precision

Although modern grinding wheels are powered by electricity, water remains an essential cooling element in glassmaking and enables decoration by cutting and engraving. This is where the final touches are applied, as the skilled hands of craftsmen (and often craftswomen) produce visually stunning and delicate patterns.



Love and Light

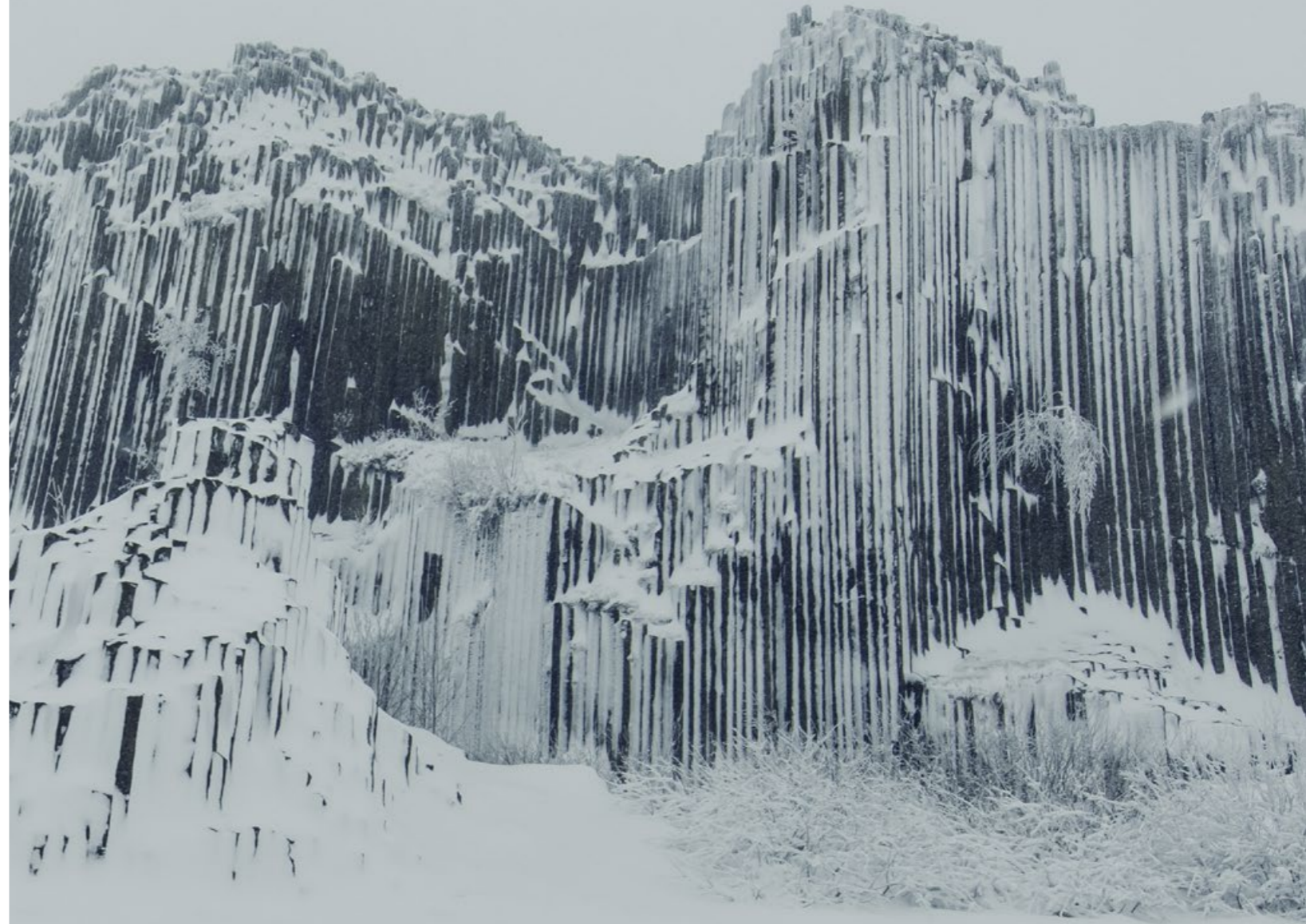
The name Lasvit combines the Czech words for love and light. If the quality that brings the most out of glass is light, then the word that best describes our work is love. We simply love what we do. It's our goal to employ the best of the best and produce glass creations of outstanding quality. We make sure that love shows through every detail of our work and multiplies its value.





© Klič Mountain
GPS: 50°47'19.000"N 14°34'22.002"E





© Panská skála Rock
GPS: 50°46'9.705"N, 14°29'6.516"E

BESPOKE INSTALLATIONS



own glass:
oke strip
ect

Our bespoke lighting sculptures, with intense combinations of light and energy, impose an extraordinary quality upon any interior. Yet each piece is custom-designed to enhance its particular environment. It may spectacularly dominate, comfortably complement or boldly contrast a space, depending upon the requirements of architects or designers in the service of their clients.

Centerpieces are, as their name implies, the perfect solution for large entry halls, dining rooms, living rooms or meeting spaces. Very large spaces may draw upon the dynamics of repetition, brilliantly making use of several such sculptures. More generally, they create natural focal points within such areas. luxury apartments and residences.

1x 12,5mm drywall

GU10

S.F.: F

COB 7W, 220V/5

Wire
Stainless
Safety rin
With saf
M
Super

330

GOLDEN SUMMER

Nature collides with modernity in Surabaya, the Indonesian `City of Heroes` in a unique mix. Petra Krausova's Golden Summer lighting sculpture, commissioned for a private residence and made from yellow, orange and brown tinted hand-blown glass, reflects this dichotomy. It transports the viewer to the short period of time when summer, still warm and sunny, changes into fall.

Lasvit Designer /
Petra Krausova

Private residence /
Surabaya





THE DANCE

Hand-blown glass beads form doubled layers that spiral around a crystal center and resemble the double-helix of DNA. To a less scientifically-minded observer, it may embody the fragile dance of delicate particles. The installation as a whole is monumental, measuring 17 meters and spanning the entire height of a private London residence, with separate circuits for each of its six floor span.

Lasvit Designer /
Adam Kohout

Private residence /
London





GROWING VASES

This extraordinarily playful lighting installation alludes to a whimsical glass forest filled with abstract flowers and branches. Metal pipes used by its glass-blowers are still attached to the objects they were used to make.

By turning these pipes into flowers and branches and the glass into vases, we literally turned convention on its head. Lasvit made flowers blooming in vases into vases blooming from flowers to represent the flower bulbs that draw their nutrients from plants by photosynthesis and thus store new life.

Lasvit Designer /
Nendo

Chateau Monferrier /
Périgueux





BIRD FLOCKS

The Presidential Suite of the Peninsula is likely the most luxurious hotel suite in Hong Kong, with stunning views over the entire Hong Kong Island. Designer Libor Sostak enhanced the elegant and soft interior design with a lighting sculpture so open and airy it resembles a flock of birds in flight. Spanning nearly 10 meters, its hand-blown glass spiral elements gradate from clear crystal to mica finish to delicate amber hues. This organic sculpture exemplifies modern glass at its most elegant.

Lasvit Designer /
Libor Sostak

Interior Designer /
The Gettys Group

The Peninsula Hong Kong





HYDRANGEA

Lasvit designed this lighting sculpture for an Omkar show-flat in one of their recent real-estate developments in Mumbai. The design is inspired by the amorphous textures and shapes of the hydrangea flower. Its mounds of individually attached petals are made of hand-blown glass chips with structured surfaces. The glass is clear, with metal coating and creates an effect of depth and luster. This lustrous theme is further enriched by the soft metallic coating of the ceiling.

Lasvit Designer /
Jana Ruzickova

Omkar Show Flat /
Mumbai



CRYSTAL CASCADE

Complementing an area of the main lobby, Crystal Cascade acts as a dividing element of the space as well as perfectly illustrating its unique atmosphere. Visitors may well feel that they are facing an actual waterfall.

The Crystal Cascade installation is comprised of hand-blown glass drops in ranges of color from clear to light blue with fiber optics inside. Other components include clear-cut lead-crystal pearls. All the materials beautifully reflect the qualities of water, creating the visual impact of a water cascading.

Lasvit Designer /
Tana Dvorakova & AB Concept

Interior designer /
AB Concept Hong Kong

The Gloucester, Hong Kong



UOVO

Despite its ultra-modern simplicity, the Uovo lighting sculpture appears to be a fairy-tale, a radiant mystical gem from a faraway land. Built around a theme of reflection, its individual silver “eggs” combine as a mountain of precious rounded mirrors, capturing nearby objects and multiplying them into infinity. This endless play upon internal and external imagery infers the very essence of time and space, indeed to the Universe as well – expansive, yet dynamically curved. Circling the sculpture, much like planets orbiting the Sun, we lose ourselves in infinite reflection, as well as glimpse the inner heart of the sculpture enhanced by LED lights.

Lasvit Designer /
Rony Plesl

Private residence /
Calcutta

Private Residence /
Prague







DIAMONDS

Resembling clear-crystal droplets, the individually hand-blown crystal elements are inspired by the facets cut into diamonds, hence its name. The piece displays a jewel-like iridescence, seeming like diamonds raining from the sky. Its stunning effect is further enhanced by the reception area's marble-clad walls, leading to a showcase-flat for luxury residential projects.

Lasvit Designer /
Jana Ruzickova

The Peak @ Cairnhill
Sales Gallery, Showflat /
Singapore



ALICE

The inspiration behind the Alice sculpture was a search for commonality in glass and nature. Glass, as in nature, is organic and unpredictable, where each leaf and tree is unique. Bringing these unique optical properties of glass to the sculpture evokes an experience underpinned by its name, a sense of Alice in Wonderland. Alice is a kinetic bloom, its traces to flowers equally fragile, original and unique. Since ancient times, flowers symbolized peace and love, values as fragile as the flowers themselves and an undeniable property of glass.

Lasvit Designer /
Petra Krausova

Mock-up room at MACSK /
Singapore



GOLDEN WATERFALL

The villa's foyer focuses upon a light sculpture spanning two floors in height. The hand-blown glass elements are crystal clear at their perimeter, silver-coated and turning light amber at the heart of the sculpture. Its overall aesthetic effect is that of a sparkling, shimmering and dazzling golden glass waterfall.

Lasvit Designer /
Tana Dvorakova

Private Residence
Emirates Hills /
Dubai



PIROUETTE

Despite its two meter height, this lighting sculpture dances lightly in the air in the surround of a staircase. It's lightness and grace derives from four layers of clear and opaque hand- blown glass tubes, each cluster enclosed by a specific circular or crescent shape. The repetition of gently curved tube elements creates the effect of movement, reminiscent perhaps of a swirling ballerina's skirt gracefully frozen in space.

Lasvit Designer /
Katarina Kudejova Fulinova

Private Residence
Emirates Hills /
Dubai





GOLDEN TAPES

Tapes constructed from hand-blown glass give the illusion they are peeling from this light sculpture and slowly descend toward the floor in a swirl. Reminiscent of tree bark or the work-station of a woodcarver, these glass ribbons in several shades of amber become the focus of each space and endow it with the warm colors of early autumn.

Lasvit Designer /
Tana Dvorakova

Private Residence /
Middle East





GRANDEUR

With grandeur as part of the design specification, Tana Dvorakova combined classic crystal chandelier themes with more contemporary elements. The periphery of the structural rings are decorated with hand-blown petals, adding a refined style with traces of Indonesian flavor. Unlike traditional chandeliers, where metal rings are often exposed, in this case they are studded with crystal prisms, evoking an airy feel to an otherwise dominant and majestic piece.

Lasvit Designer /
Tana Dvorakova

Private residence at
Wilkinson road /
Singapore





TWILL

The unique Twill concept, fashioned from hundreds of thousands of cut fine crystal beads, woven into a fabric-like texture, adorns some of the most luxurious residences in the world.

Lasvit Designer /
Tana Dvorakova

One Park Gubei /
Shanghai



MIST

Lasvit's Mist sculpture is the design of a linear veil in a ballroom winding along the entire length of the ceiling as a garland. Mist is composed of three separate sections but is perceived as a continuous line, which is dynamically tortuous in its space.

Lasvit Designer /
Jitka Kamencova Skuhrava

One Park Gubei /
Shanghai



POPPY

The ruffled and wild petals of poppies served as to inspire this Lasvit lighting sculpture. Constructed of petals of twill, the sculpture gives an impression of gentility and is completely in concert with the interior, adding a fairytale atmosphere to the space.

Lasvit Designer /
Tana Dvorakova

The Ritz – Carlton Residences /
Singapore



LASVIT CRYSTAL WALL

The Lasvit Crystal Wall incorporates a flexible architectural feature that enhances any surroundings, whether used for decoration or as a partition. Its glass components may be silver coated, colored or clear, depending on the intent of the interior design.

Luxury and functional interior design inspired the tradition of glass applications in similar Czechoslovak architecture of the 1960's and 1970's.

The glass clip-in panel system combines the beauty of glass with flexible design solutions. Dazzling crystal components are fastened to a supporting metal structure, allowing nearly limitless arrangement.

Lasvit Designer /
Koncern Design Studio

Private residence /
Calcutta

Private Residence /
Middle East

Private Residence /
Dubai









FLOUNCES & GLASS MAZE

The Main Lobby installations feature nearly three-meter tall lighting sculptures. Their four layers of hand-blown crystal tubes in amber and clear colors are gently draped much like flounces on a skirt. Each tubular segment is hand shaped to create subtle curves, further underlined by the flower-like overall design.

We created an installation represented by the two-meter height sculpture that consists of glass plates with an etched pattern, set in a mounting with a rosy-gold mirror finish. Viewed from below, the narrow glass sheets create a maze-like pattern.

Lasvit Designer /
Katarina Kudejova Fulinova
Daniel Jacek

One Park Gubei /
Shanghai





CRYSTAL FLARE

A private luxury residence in Los Angeles holds within its walls one of Lasvit's most unique and boldly contemporary designs – Katarina Kudejova Fulinova's Crystal Flare. Created with seven crystal rings, lit from within, they interconnect to remind one of the Olympic circles. Each ring is furnished with a golden plaque commemorating an important victory by LA's hockey team in the NHL and basketball team in the NBA.

Lasvit Designer /
Katarina Kudejova Fulinova

Private residence /
Los Angeles





COLLECTIONS

A collage of architectural drawings, a glass of beer, and crumpled paper. The background is a mix of white and brown papers with various sketches and text. In the foreground, a glass of beer is shown in motion, with a stream of golden beer pouring into it. The overall aesthetic is one of creative design and craftsmanship.

Having enjoyed productive and creative partnerships with architects and designers worldwide, we have collaborated with some of the best to bring original designs to individual customers. The Lasvit team, in collaboration with such world renowned designers as Daniel Libeskind, Maarten Baas, Michael Young, Nendo, Arik Levy, Mauricio Galante, Lars Kemper and Peter Olah, created designer lights and lighting sculptures, as well as limited editions pieces. These international icons of the design profession, along with Lasvit technical expertise, now bring the best of both worlds directly to the design connoisseur for personal purchase.

Our Collections represent the result of these international collaborations, as well as works by famous individual Czech designers who come from the rich Bohemian glassmaking tradition. In essence, the Collections present the only Lasvit ready-made designs instantly available to retail customers.

Thanks to their smaller size, these unique designer-pieces are suitable for more intimate home settings and excellent for creating groups or arrangements, depending upon the individual interior and providing a myriad of possibilities for use in original ways.

JAR RGB

Jar RGB is a lighting project connecting thin and colorful glass blowing techniques with the concept of RGB color mixing. Using white glass for one of the hanging jars turns it into an oversized light-bulb, generating light for the entire fixture. Observing one jar in juxtaposition with the space surrounding them provides a unique and memorable example of color superimposition.

Lasvit Designer /
Arik Levy

Týnec Chateau /
Týnec



NEVERENDING GLORY

The Neverending Glory collection recalls nostalgic emotions and interprets opulent candle chandeliers in fascinating way that symbolizes prime moments of appreciation and glory. In individual silhouettes, you may recognize iconic chandeliers from five of the world's most eminent concert halls and theaters; La Scala in Milan, Palais Garnier in Paris, the Metropolitan Opera in New York, the Bolshoi Theater in Moscow, as well as the Czech Republic's Estates Theater in Prague.

Lasvit Designer /
Jan Plechac, Henry Wielgus

Private Residence /
Hamburg





GROWING VASES & PRESS LAMP

Lasvit light sculptures enhanced the style and personality to two loft apartments in Prague, highlighting their transition from a former factory building into trend-setting living spaces. Growing Vases adroitly introduces the versatile delicacy of glass within this former industrial space. Japanese designer Nendo used the metal pipes employed by glassblowers, retaining them within the glass objects they created.

The flexible clean design of the Press Lamp enables its single use as an accent-light or clustered as a dominant group that calls out for attention.

Lasvit Designer /
Nendo

Loft /
Prague







FROZEN

Inspired by melting ice found commonly in nature, Maxim Velcovsky's design, called Frozen, spills glass over a metal form and achieves great visual strength from its natural properties. The result is a 'frozen' glass sculpture, combining richness of texture, wrinkled detail, bubbles and varied thicknesses.

Lasvit Designer /
Maxim Velcovsky

Loft /
Prague



INHALE LAMPS

The lamp was formed by blowing glass into the form of an air bubble then sucking the air away. Ordinarily, glass is made by blowing air into the molten material. The inhale lamp, on the other hand, comes from mechanically inhaling while still in a molten state. It's form is created by negative air pressure.

Lasvit Designer /
Nendo

Chateau Monferrier /
Périgueux

120 / 121

Collections

Lasvit Residential



MOULDS

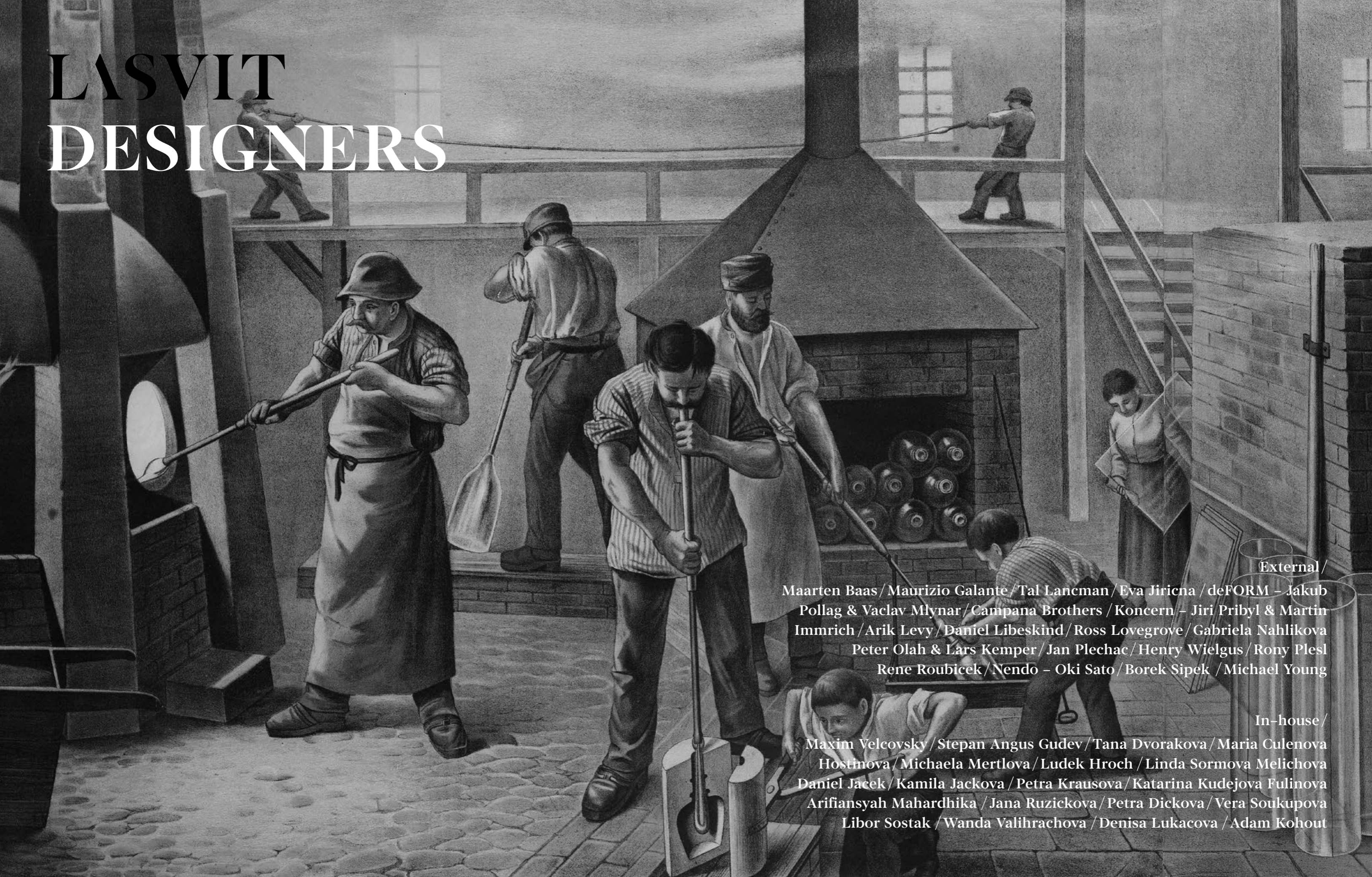
Moulds, one of Lasvit's most prominent collections, currently decorate the interior design studio of Redman Whiteley Dixon. Suspended lights capture the moment when molten glass escapes the beech mold, resisting its expected shape. They further reference the craft of glassmaking, placing the light source directly within the charred form and creating the impression that the heat of the kiln remains inside.

Lasvit Designer /
Jan Plechac, Henry Wielgus

Interior design studio of Redman
Whiteley Dixon /
London



LASVIT DESIGNERS



External /

Maarten Baas / Maurizio Galante / Tal Lancman / Eva Jiricna / deFORM – Jakub Pollag & Vaclav Mlynar / Campana Brothers / Koncern – Jiri Pribyl & Martin Immrich / Arik Levy / Daniel Libeskind / Ross Lovegrove / Gabriela Nahlikova / Peter Olah & Lars Kemper / Jan Plechac / Henry Wielgus / Rony Plesl / Rene Roubicek / Nendo – Oki Sato / Borek Sipek / Michael Young

In-house /

Maxim Velcovsky / Stepan Angus Gudev / Tana Dvorakova / Maria Culenova / Hostinova / Michaela Mertlova / Ludek Hroch / Linda Sormova / Melichova / Daniel Jacek / Kamila Jackova / Petra Krausova / Katarina Kudejova / Fulinova / Arifiansyah Mahardhika / Jana Ruzickova / Petra Dickova / Vera Soukupova / Libor Sostak / Wanda Valihrachova / Denisa Lukacova / Adam Kohout



External /



deFORM Jakub Pollag
Vaclav Mlynar



Koncern — Jiri Pribyl
& Martin Immrich



Arik Levy



Eva Jiricna

In-house /



Maurizio Galante &
Tal Lancman



Maxim Velcovsky /
Art Director



Libor Sostak



Katarina Kudejova
Fulinova



Denisa Lukacova



Stepan Angus Gudev



Tana Dvorakova



Ross Lovegrove



Gabriela Nahlikova



Peter Olah &
Lars Kemper



Daniel Libeskind



Michaela Mertlova



Wanda Valihrachova



Ludek Hroch



Daniel Jacek



Jan Plechac &
Henry Wielgus



Rony Plesl



Humberto & Fernando
Campana



Oki Sato (Nendo)



Kamila Jackova



Linda Sormova
Melichova



Petra Krausova



Arifiansyah
Mahardhika



Borek Sipek



Maarten Baas



Rene Roubicek



Michael Young



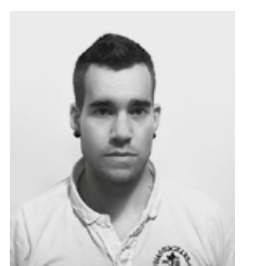
Jana Ruzickova



Petra Dickova



Vera Soukupova



Adam Kohout

LASVIT OFFICES

Headquarters / Novy Bor / Czech Republic

Lasvit s.r.o.
namesti Miru 55 / 473 01 Novy Bor / Czech Republic
T+420 481 120 810 / F+420 481 120 622
E lasvit@lasvit.com / www.lasvit.com

Flagship Showroom / Prague

Lasvit s.r.o.
Komunardu 32 / 170 00 Prague / Czech Republic
T+420 222 362 990 / F+420 481 120 622
E lasvit@lasvit.com / www.lasvit.com

Hong Kong

Lasvit Limited / H.K.
8F / The Hennessy / 256 Hennessy Road / Wan Chai / Hong Kong S.A.R.
T+852 2866 1234 / F+852 2866 2212
E asia@lasvit.com / www.lasvit.com

Singapore

Lasvit Pte. Ltd. / Singapore
75 Neil Road / Singapore 088902
T+65 6542 9422 / F+65 6542 5040
E singapore@lasvit.com / www.lasvit.com

Shanghai

Lasvit Co. Ltd. / Shanghai
Room 906 / 9F / No.1728 / West Nanjing Road / Shanghai / 200040 / China
T+86 21 2226 3206 / F+86 21 6010 0599
E shanghai@lasvit.com / www.lasvit.com

Dubai

Lasvit (Gulf) FZE
P. O. Box 262731 / JAFZA 19, Office 1707 / Jebel Ali Free Zone / Dubai / UAE
T+971 4883 0811 / F+971 4883 0812
E gulf@lasvit.com / www.lasvit.com

Los Angeles

Lasvit Inc. / USA Headquarters
28368 Constellation Road Unit 350 / Valencia / California / 91355 USA
T+1 661 294 6507 / F+1 661 294 6524
E america@lasvit.com / www.lasvit.com

New York

Lasvit Inc. / New York
401 Broadway / Suite 1412 / New York / NY 10013 USA
T+1 212 219 3043 / F+1 212 219 3053
E america@lasvit.com / www.lasvit.com

London

Lasvit Limited / UK
7 Tilney Court / Old Street / London EC1V 9BQ / United Kingdom
T+44 20 7490 2004
E uk@lasvit.com / www.lasvit.com

Moscow

OOO "Lasvit" / Russia
2 Tverskaya-Yamskaya Str. 31135 / office 612 / Moscow 125047 / Russian Federation
T+7 499 978 7644
E russia@lasvit.com / www.lasvit.com

Milan

Lasvit SRL / Italy
via Gaspare Bugatti 15 / 20144 Milano / Italy
T+39 02 58108589 / F+39 0287163002
E italy@lasvit.com / www.lasvit.com

Paris

Lasvit SARL / France
10 rue Saint-Augustin / 75002 Paris / France
T+33 06 52 97 10 79
E france@lasvit.com / www.lasvit.com

First published and distributed by

Lasvit s.r.o.
nám. Míru 55 / Nový Bor / 473 01 / Czech Republic
T +420 481 120 810 / F +420 481 120 622
E lasvit@lasvit.com / www.lasvit.com

Edited and produced by Lasvit s.r.o.

Book Design – Symbiont
Typeface – Lasvit / Kievit
Photo – Filip Šlapal / Jan Kuděj / Salim Issa / Jiří Turek /
Lukáš Pelech / Martin Chum / Alexandr Dobrovodský

Text © Lasvit 2015
© Lasvit 2015

All rights reserved. This publication or its parts may not be reproduced, stored or shared in any form, including texts and photos without permission in writing from the copyright owner(s).

Printed and bound in the Czech Republic / Indigoprint s.r.o.